

APWA Washington | 2018 Fall Conference

Women in Leadership – Learning to Lead



Presented by:

Diane Pottinger, PE – District Manager, North City Water District
Erika Schuyler, PE – Senior Engineer, Murraysmith



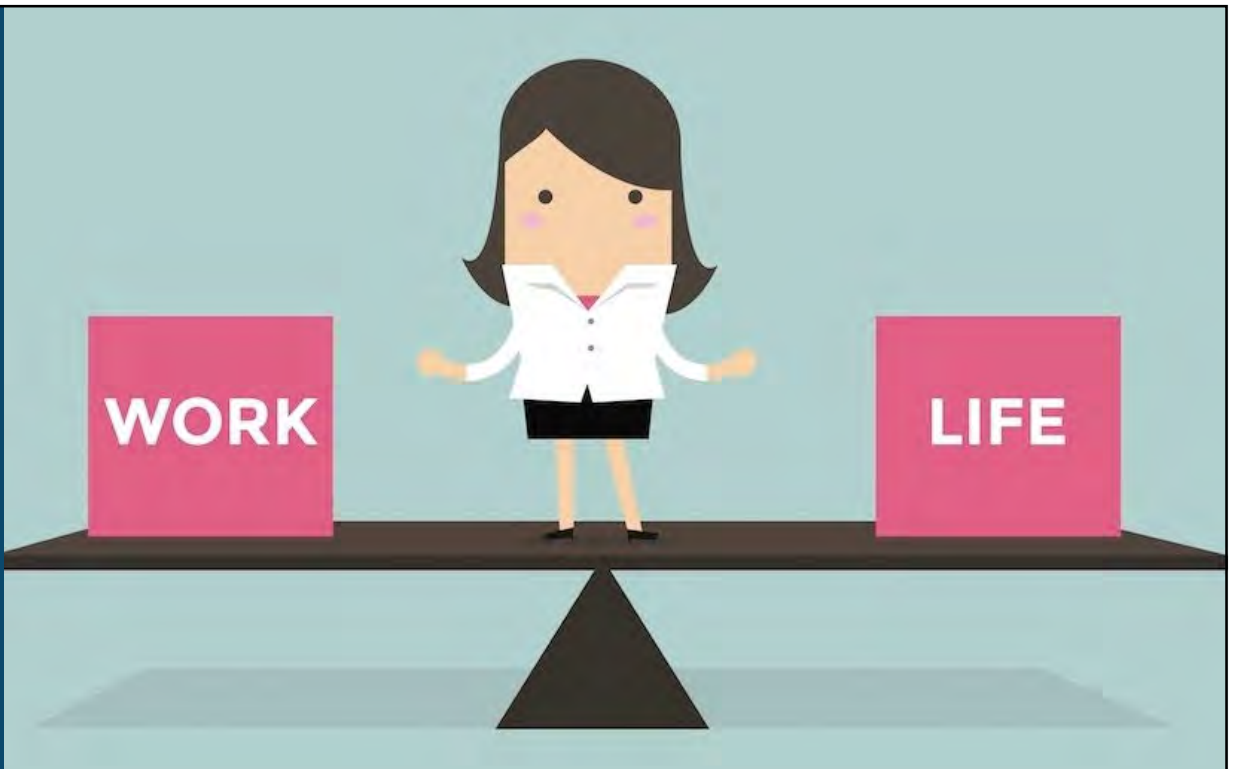
Agenda

- 1 Background
- 2 Challenges
- 3 AWWA Women in Leadership Symposium
- 4 Workplace leadership
- 5 Mentoring and personal growth
- 6 What's next?
- 7 Q&A

Background



Challenges





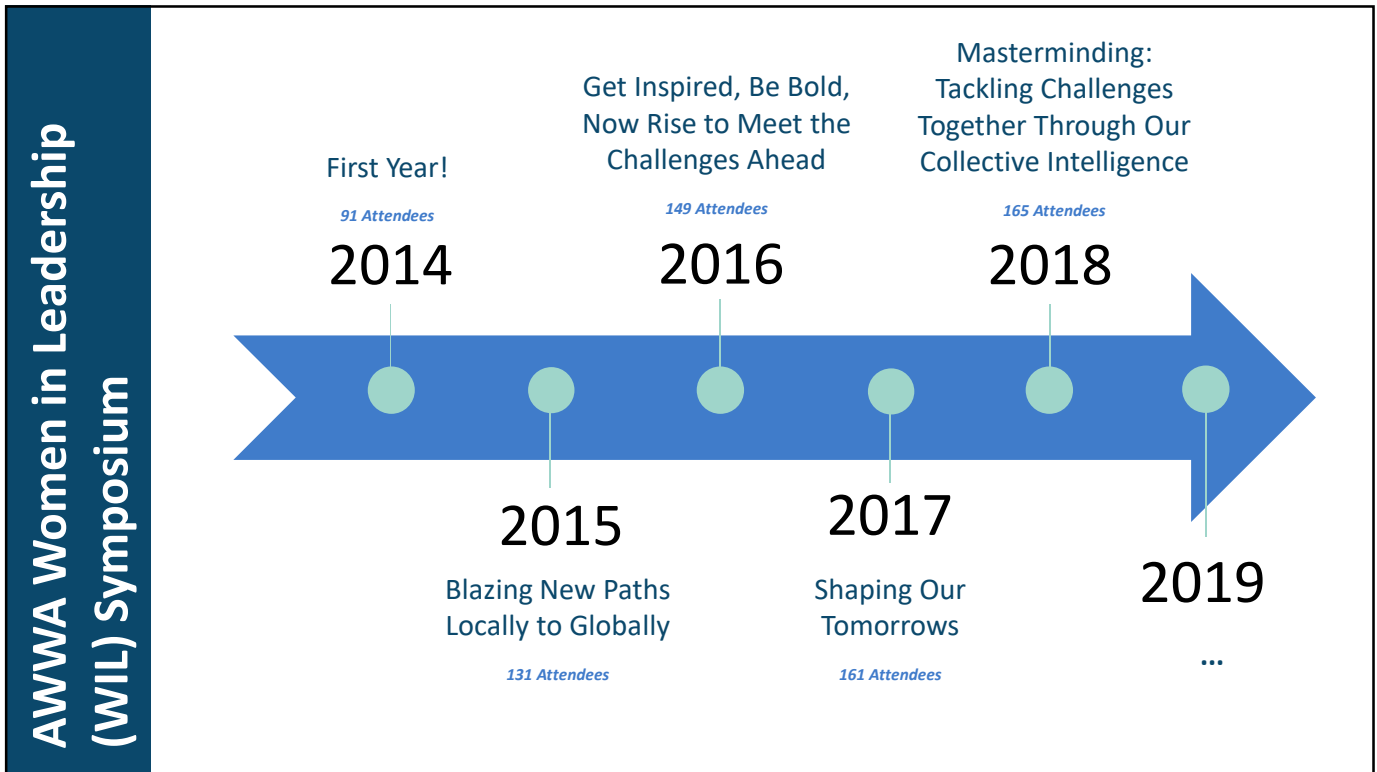
Challenges



AWWA Women in Leadership (WIL) Symposium

2014

2018

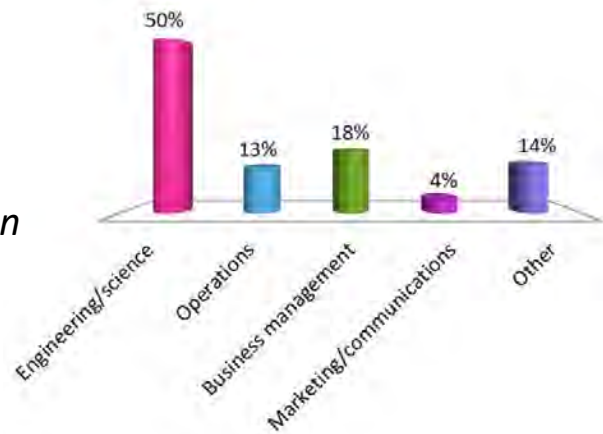


Who's in the room? (2018 Event)



My work focuses on:

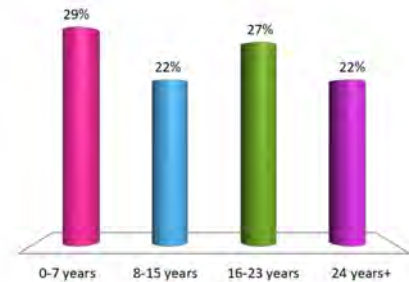
1. *Engineering / science*
2. *Operations*
3. *Business management*
4. *Marketing / communication*
5. *Other*



Who's in the room? (2018 Event)

I have been in my field for:

1. 0-7 years
2. 8-15 years
3. 16-23 years
4. 24 years+



I am here today to: (multiple answers allowed)

1. Learn from leaders
2. Grow my skills for success
3. Be inspired!
4. Network with my peers



Networking



Benefits of Committee

“Cultivate a network of trusted mentors and colleagues. Other people can give us the best insight into ourselves – and our own limitations.

- Maria Castañón Moats (US Assurance Leader of PwC)

Workplace leadership



Workplace leadership



CONTACT

520 Pike Street, Suite #1350
Seattle, WA 98101

Phone: 206.462.7030



Erika Schuyler, PE, Office Lead
Erika.Schuyler@murraysmith.us

Workplace leadership



2018 WIL Planning Committee, Mentors, Mentees, and Friends

Mentoring



Mentoring



Organic



Mentoring goes both ways

Personal Growth



Personal Growth



Now what?



Now what?

“Leaders are not just born. Sure, some people are born with strong competencies and strengths for leading in certain situations, but it is very clear that leadership can also be developed. That means everyone can strengthen their skills and abilities to lead and influence.”

- Dr. Susan Madsen (Professor of Leadership & Ethics, Utah Valley University)

Now what?

Look for leadership opportunities:

- APWA
- AWWA
- WTS
- PNCWA
- WASWD

**Share your knowledge:**

- Become a mentor
- Encourage peers and co-workers
- Be an inspiration!

**Enable leadership growth:**

- Allow for external leadership opportunities
- Encourage internal leadership opportunities
- Inspire leaders with leaders

Agenda

- 1 Background
- 2 Challenges
- 3 AWWA Women in Leadership Symposium
- 4 Workplace leadership
- 5 Mentoring and personal growth
- 6 What's next?
- 7 Q&A



Q&A



Thank you!