





Panel Format

1. Attendee survey
2. Panelist 5-minute mini-presentation and 5-minute group discussion on each topic
3. Open discussion

Panelists

1. Doug Smith @ MENG Analysis - Moderator
2. Paul Wilhem @ City of Everett - Metaverse
3. Arnab Bhowmick @ Aakavs – Asset Management
4. Cameron Cole @ WA State CRAB - GIS
5. Joe Fly @ BlueSky - Drones

Attendee Survey

1. Organization
2. Role
3. Metaverse experience
4. Technology interests

LEARNING OBJECTIVES

1. Explain the Metaverse to your staff
2. Identify 3 new technologies for Public Works
3. Apply technology for better integration



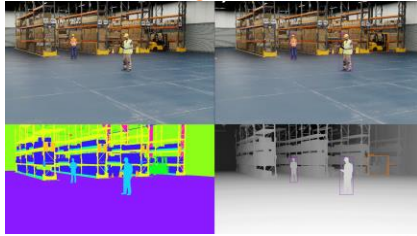
The Metaverse – Paul Wihelm

- Digital foundations
- What is it?
- How is it being used?
- Who is using it?

Metaverse Digital Twin – Paul Wihelm



Metaverse AI Training – Paul Wihelm



Asset Management – Arnab Bhowmick

- Enterprise Asset Management
- AVR/ VR Tech
- Drones
- Wearables
- Big Data
- AMI/AMR
- 3-D point clouds
- Underground Mapping
- Cloud and Mobility
- Cyber Security



Asset Management – Arnab Bhowmick



CRAB & GIS – Cameron Cole & Tommy Weed



Our purpose:
The Washington State County Road Administration Board (CRAB) provides accountability through [standards of good practice](#), fair administration of funding programs, and engineering and technology assistance to the 39 Washington State County Road Departments in accordance with [RCW 36.78.070](#).



CRAB & GIS – Cameron Cole & Tommy Weed



Drones and Autonomous Vehicles

- Air, land & sea
- Surveys and inspections
- Emergency response
- Transportation
- Supporting technologies (5G, etc.)



Emerging Technology - Open Discussion

- Challenges
- Opportunities
- Cost/Benefit
- Success Stories



Emerging Technology Panel Closing

- Interest in AR/VR/AI/MV demonstrations
- Technology Committee meetings
 - 10 am 2nd Thursdays via MS Teams
- Thanks to panelists and attendees
- Attend later sessions including CRAB GIS