

# Local Road Safety Plans



**Matthew Enders, P.E.**

Technical Services Manager, WSDOT Local Programs

**Roger Millar**

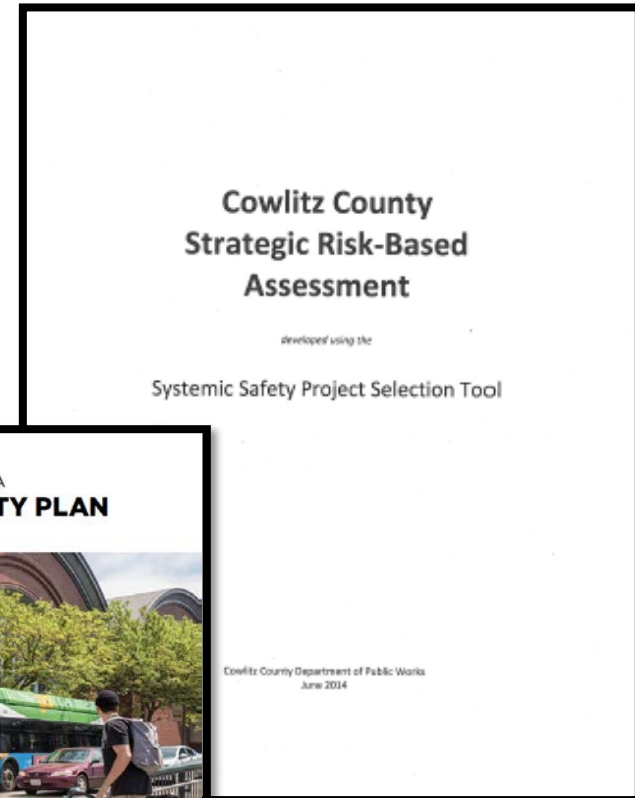
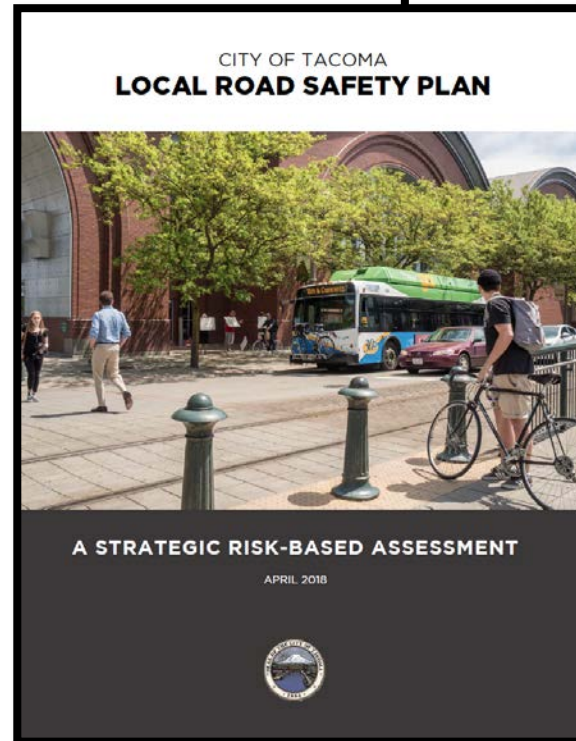
Secretary of Transportation

APWA Conference  
Wenatchee, WA

October 3, 2018

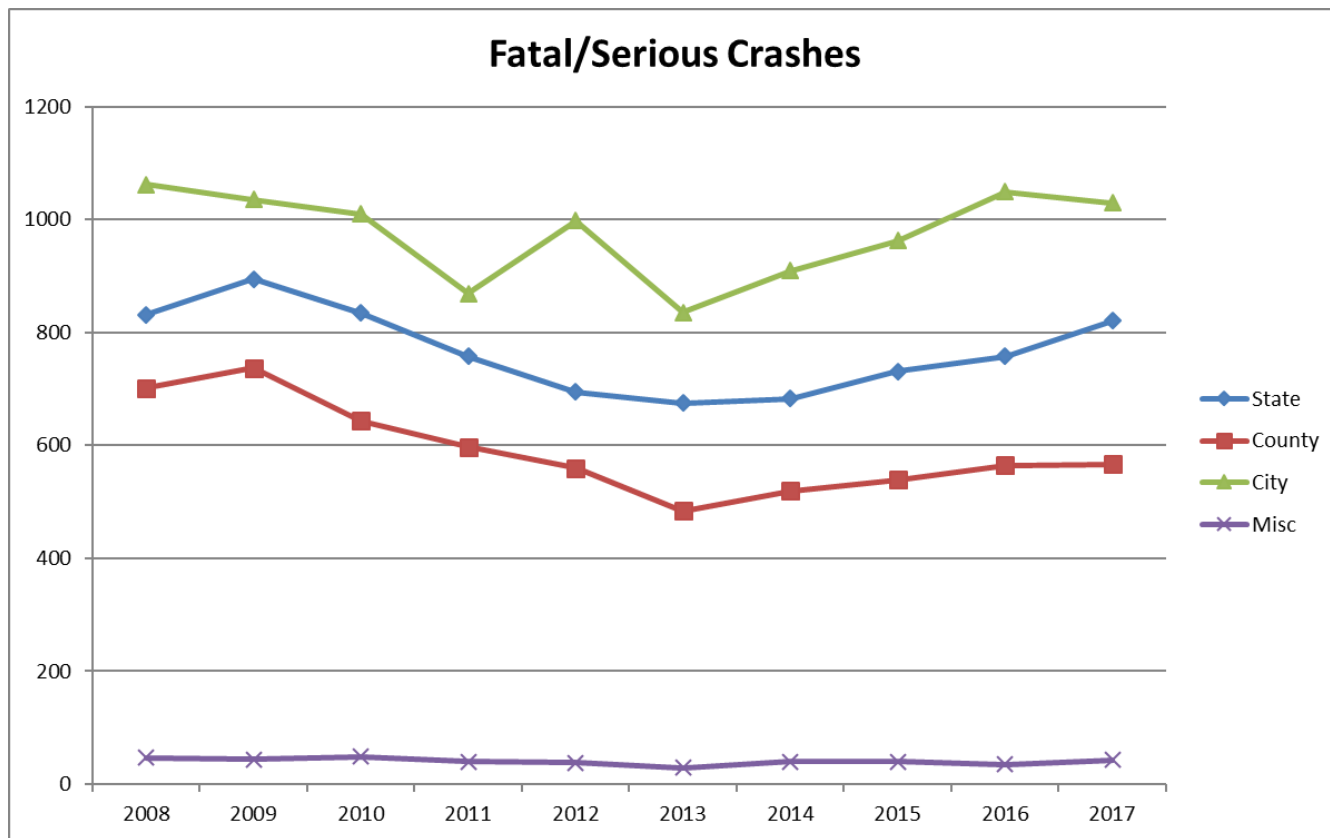
# Local Road Safety Plan Basics

- An agency's data-driven, risk-based analysis and prioritization of roadways for traffic safety
- 57 plans in Washington
  - 33 county
  - 24 city



# Why Local Road Safety Plans?

- To create a more sustainable safety program
- To help agencies identify safety priorities using risk

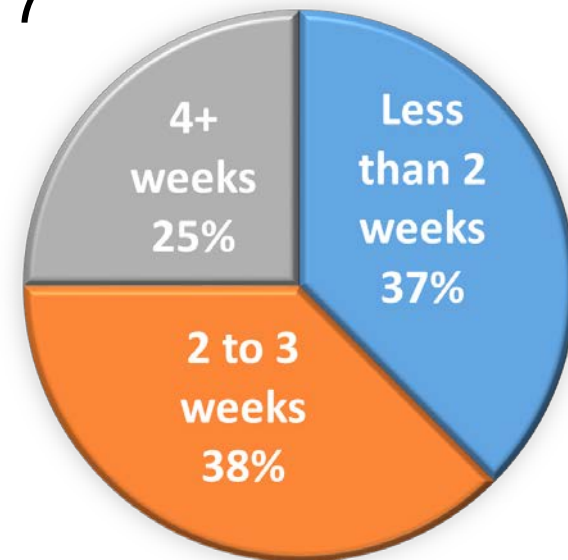


# Local Road Safety Plan Steps

Local Road Safety Plan Step		Plan Element
1	Analyze summary data to identify focus/priorities	List of crash priorities based on data
2	Analyze individual fatal/serious crashes to identify risk factors	Description of risk factors & selection process
3	Select most common risk factors	
4	Analyze roadway network for presence of risk factors	Prioritized list of roadway locations
5	Create prioritized list of roadway locations	
6	Identify countermeasures to address prioritized locations	Description of countermeasures & selection process
7	Develop a prioritized list of projects	Prioritized list of projects

# City & County Feedback

- Spring 2018 survey to 51 cities & counties
  - Cities that submitted a plan in 2018
  - Counties that submitted a plan in 2017
  - 16 agencies (31%) responded
- How much staff time (including training) did it take to create your Local Road Safety Plan?
- 100% of local agencies said this effort was useful for identifying safety priorities
  - 69% very useful, 31% somewhat useful



# How WSDOT Uses the Plans

- Clear indication of local agency data-driven priorities
- Fund projects top down, **if** projects are:
  - Effective
  - Systemic

Total	\$1,222,990	\$1,904,165	\$883,640	\$2,895,000	\$1,032,200	\$2,904,588	\$1,394,000
Priority 1	Shoulders, slopes	Guardrail, slopes	Data collection	Guardrail	Truck ramp, signing	Signing	Slopes, shoulders
Funding	\$270,000	\$553,723	\$102,500	\$570,000	\$544,200	\$37,927	\$300,850
Priority 2	Guardrail	Guardrail, shoulders, fixed objects	Data collection	Guardrail	Guardrail, signing	Signing	Slopes, shoulders
Funding	\$188,990	\$1,350,442	\$30,000	\$120,000	\$292,700	\$30,705	\$104,500
Priority 3	CLRS		Guardrail	Guardrail	Guardrail, signing, sight distance	Signing	Slopes, shoulders
Funding	\$35,000		\$139,490	\$590,000	\$52,700	\$69,897	\$60,000
Priority 4	Radar Speed Signs		Bridge rail	Guardrail	Guardrail, signing	Signing	Slopes, shoulders
Funding	\$50,000		\$170,250	\$530,000	\$142,600	\$73,318	\$337,700
Priority 5	Guardrail		Bridge rail	Delineation		HFST	Data collection
Funding	\$359,000		\$107,750	\$260,000		\$74,326	\$15,000
Priority 6	Shoulders, slopes, alignment		Bridge rail	Signing		Signing	Guardrail
Funding	\$320,000		\$124,250	\$110,000		\$51,201	\$475,200
Priority 7			Bridge rail	Guardrail		HFST	Guardrail
Funding			\$84,000	\$275,000		\$60,876	\$90,750
Priority 8			Bridge rail	Intersection reconstruct		Guardrail	Data collection
Funding			\$79,000	\$355,000		\$1,051,337	\$10,000
Priority 9			Bridge rail	Intersection grade/alignment		HFST	
Funding			\$46,400	\$85,000		\$233,074	
Priority 10						Guardrail	
Funding						\$726,818	
Priority 11						HFST	
Funding						\$460,109	
Priority 12						Data collection	
Funding						\$35,000	

# Tips for Developing Local Road Safety Plans

- Take advantage of training opportunities
  - Workshops, peer exchanges, one-on-one
- Review existing examples
- Keep it as simple as possible for your agency
- Show your thought process as you go through the 7 steps

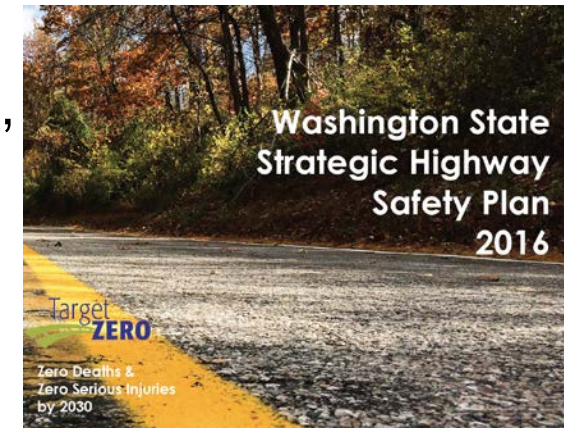
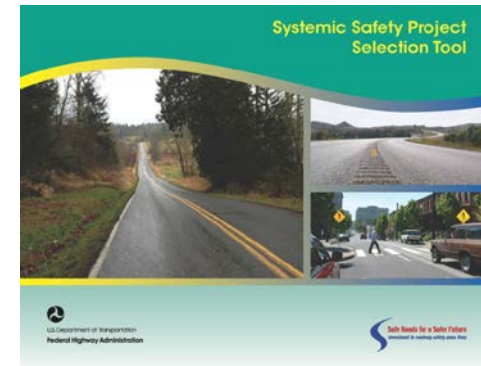
## Common Challenges

Identifying risk factors  
(steps 2-3)

Identifying countermeasures  
(step 6)

# Resources

- FHWA Systemic Safety Project Selection Tool
  - <https://safety.fhwa.dot.gov/systemic/fhwasa13019/>
  - See list of risk factors on page 18
- Target Zero
  - <http://www.targetzero.com/>
  - See countermeasures on pages 97, 104-105, 149-150, and 173-177
- FHWA Systemic Safety Website
  - <http://safety.fhwa.dot.gov/systemic/>
- FHWA Crash Modification Factor Clearinghouse
  - <http://www.cmfclearinghouse.org/>





# Contact Information

## **County Safety Program**

Matthew Enders

[Matthew.Enders@wsdot.wa.gov](mailto:Matthew.Enders@wsdot.wa.gov)

360-705-6907

## **City Safety Program**

Susan Bowe

[Susan.Bowe@wsdot.wa.gov](mailto:Susan.Bowe@wsdot.wa.gov)

360-705-7380